

Investment Plan Update



Cyclical Decoration Programme - Update

Following the formation of the Stock Investment Team to deliver the £25 million Investment Programme, supported by Riverside's Partnership Pledge, a number of inaugural projects are being undertaken following consultation with tenants, staff and external stakeholders.

One of the priorities for Impacts' tenants and staff was to revive the annual planned cyclical decoration programme. We undertook a pilot programme with Bell Group last year, from October 2018 running through to March 2019. Following excellent feedback from tenants and staff alike we appointed Bell Group to undertake the planned cyclical decorations for the next 3 years.

Some of the sites that we completed;

Denton Holme, Carlisle – External Decoration

Tenants were able to pick their preferred paint colour from a selected palette. Decoration works were carried out to multiple locations across the county, including Carlisle, Kendal, Workington and Penrith. These works included external and internal decoration to a variety of properties.

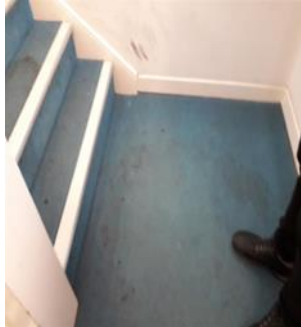
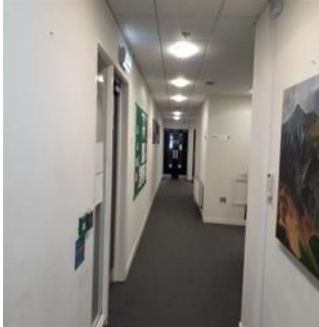


External decoration;
Before and after photos

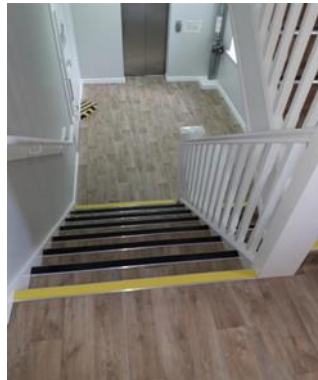
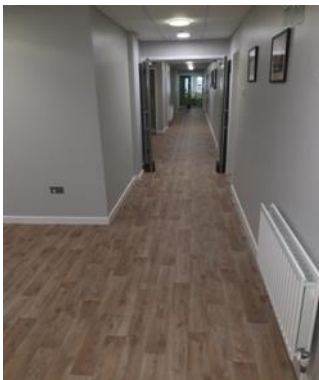




Before



After



For South Lakes Foyer (pictures above) the works also included the installation of a hatch to reception to enable visitors to have a focal point for queries. In addition we replaced all the existing communal carpet flooring throughout for easily maintainable and aesthetically pleasing vinyl flooring with colours chosen by tenants and staff. Overall the painting works were a great success and feedback received from our customers showed that 98.3% were satisfied with the works.

“We are so happy with the massive improvement over the whole building. It has lifted both staff and tenants” - *feedback received from staff at South Lakes Foyer.*

The Year 1, 2019/20 Planned Cyclical Decoration programme begins in August 2019 and runs through until March 2020. Works for this year will again include properties throughout the county.

Rob Hastings

Project Surveyor

Stock Investment Team

Tel: 01228 633 660

Email: robh@impacthousing.org.uk